



# EnviroCube Security Tower

SOLAR LIGHTING TOWER

MODEL: ECST-4SP435-4L150W

A flexible, relocatable & environmentally friendly solution for temporary lighting in a variety of applications.

## Reliable

Not dependent on mains power

## Zero Running Cost

Solar powered

## Easy to Set-up

Telescopic pole with 360° lamp swivel

## Safe

Lighting where power isn't available

## Environmentally Smart

Zero carbon emissions

## Heavy Duty Batteries

GEL deep cycle

## Excellent Autonomy

4 days back-up in overcast conditions

## Robust Construction

Built for harsh worksite conditions

## Vizona 100% Australian Owned

Support local industry



Zero Carbon



Safety



Heavy Duty



Zero Noise



Easy to Transport

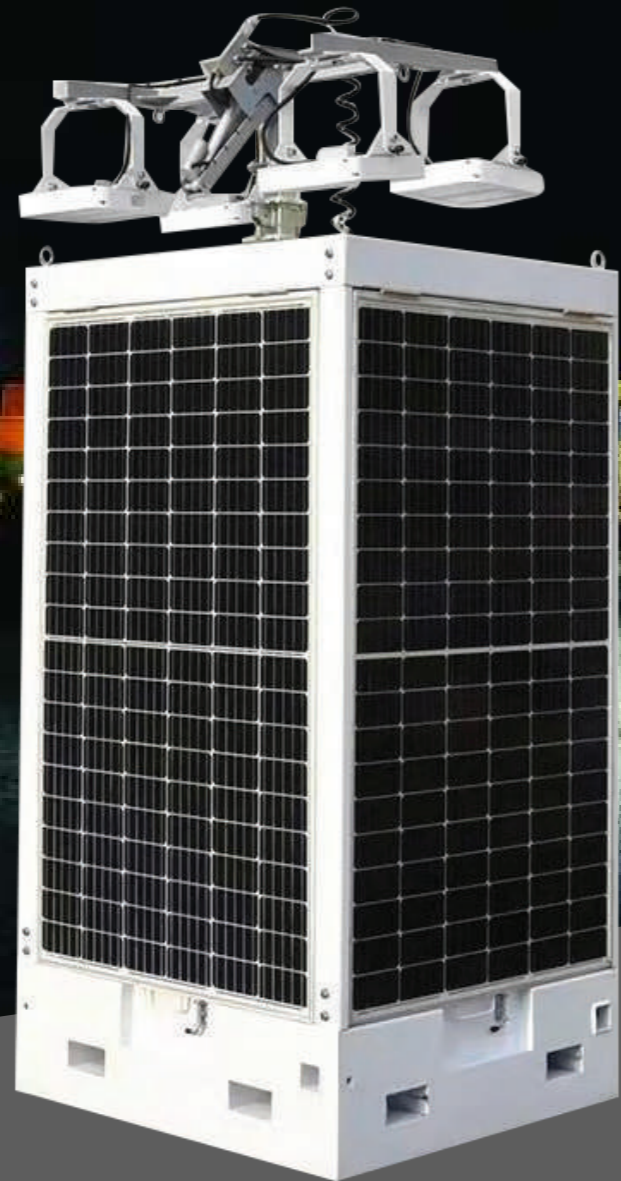


Solar Energy

# EnviroCube Security Tower

## SOLAR LIGHTING TOWER

**MODEL: ECST-4SP435-4L150W**



### Key Features

- Galvanised telescopic mast.
- Heavy duty ballast.
- Base with Forklift pockets on all sides and 4 x lifting lugs.
- Solar Panel with multiple angle adjustments.
- Anti-bird spikes for the solar panel (optional)
- High Efficiency LED Lights with Auto Dimming Function
- Dedicated Conch CCTV Camera (optional)
- Plug and play electrical connections.
- Handheld Remote controller



**Control Panel**



**LED Lights (CCTV option)**

### TECHNICAL DATA

Lamp	4 x 150W LED, IP65, 90,000Lms
Lamp Positioning	Manual Operation, Tilt: 90°, Rotation :360°
Mast	Electric Operation, Steel Telescopic type
Mast Height	7m (other heights available)
Mast Capacity	Supports 70kgs
Solar Panel	4 x 435 Watt, Monocrystalline
Battery Type	GEL 6 x 200Ah
Battery Charger	DC12V, 14,400W·h
Charging Times	4.4 Hours
Run Time	19.2 Hours
Controller	60A MPPT, 95% Efficiency
Wind Load Rating	up to 117kph
Colours	White
Transport Size	1200mm L x 1200mm W x 2700mm H
Operational Size	3100mm L x 31000mm W x 7000mm H